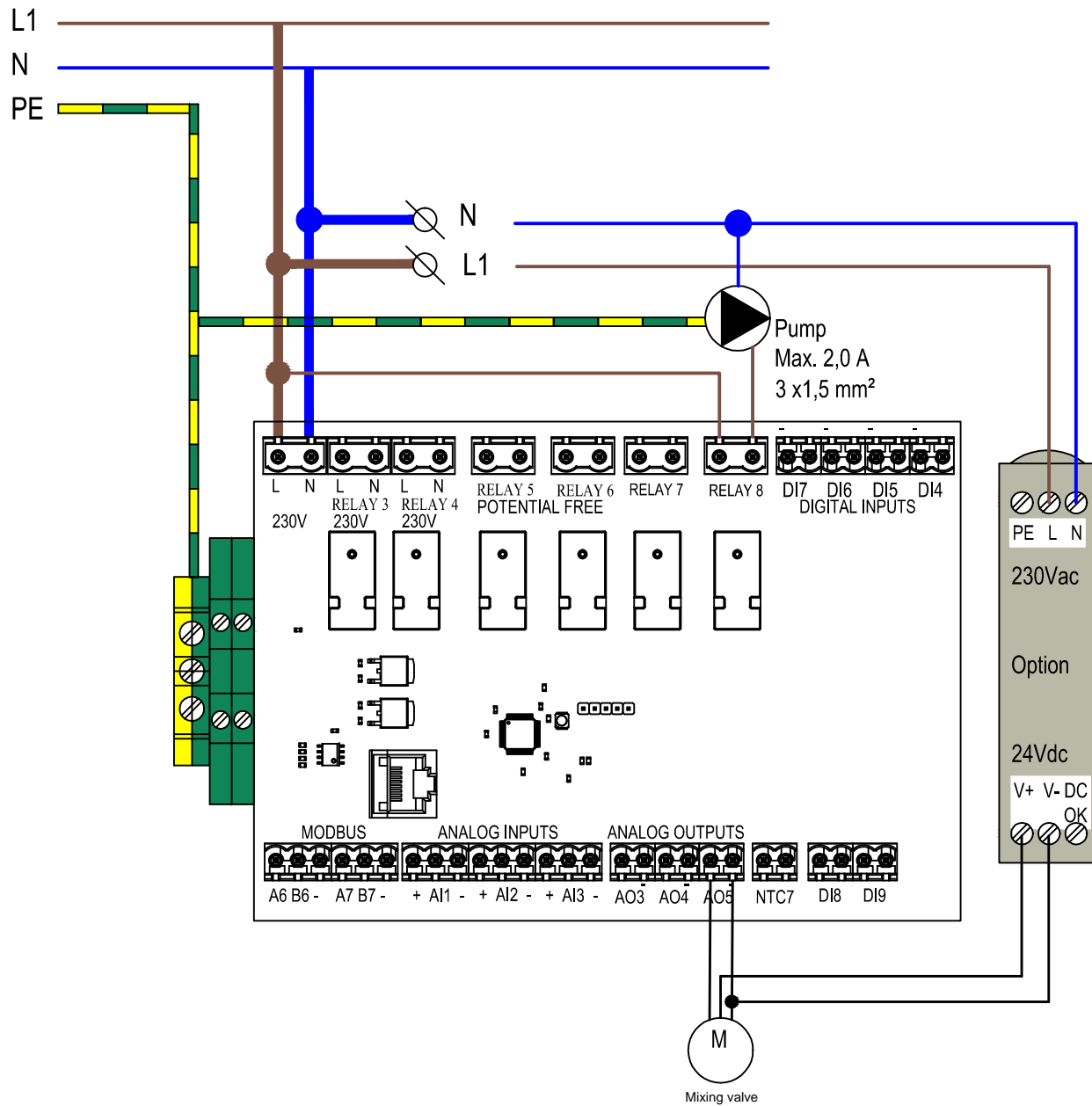
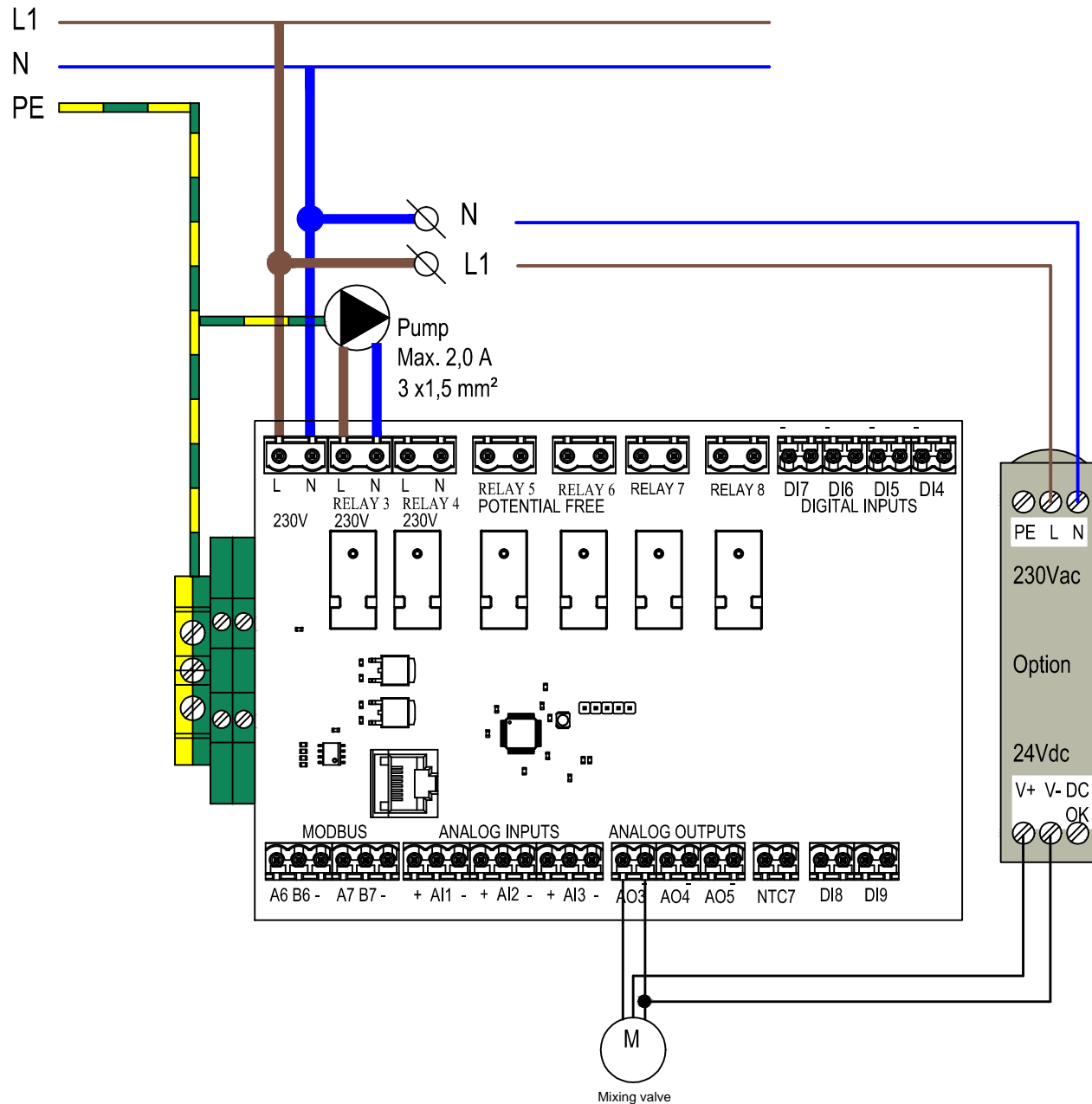


# 1. Pre heater

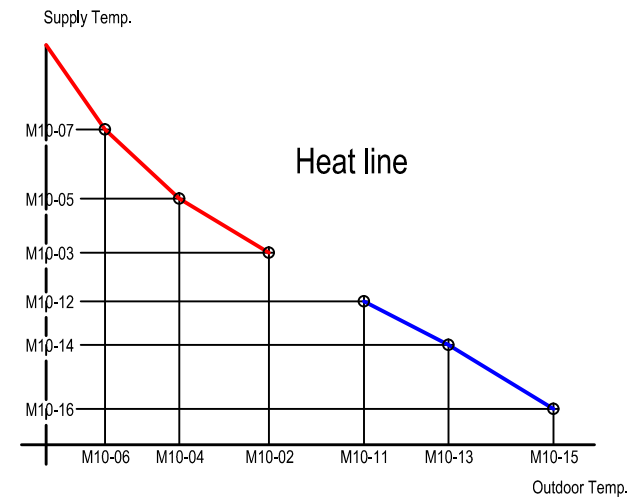


Parameter			
Menu:	M6	Relay	
Position	Parameter	Description	Unit
M6-08	11.	Preheat ODA (pump)	
Menu:	M7	Analog output	
Position	Parameter	Description	Unit
M7-05	8.	Preheat ODA valve	
Menu:	M13	Preheat frost	
Position	Parameter	Description	Unit
M13-01	Yes	Preheat ODA avail	
M13-02	2.0	Preheat ODA setpoint	°C
M13-03	7,5	Preheat ODA P-Zone	°C
M13-04	300	Preheat ODA I-Time	Sec.

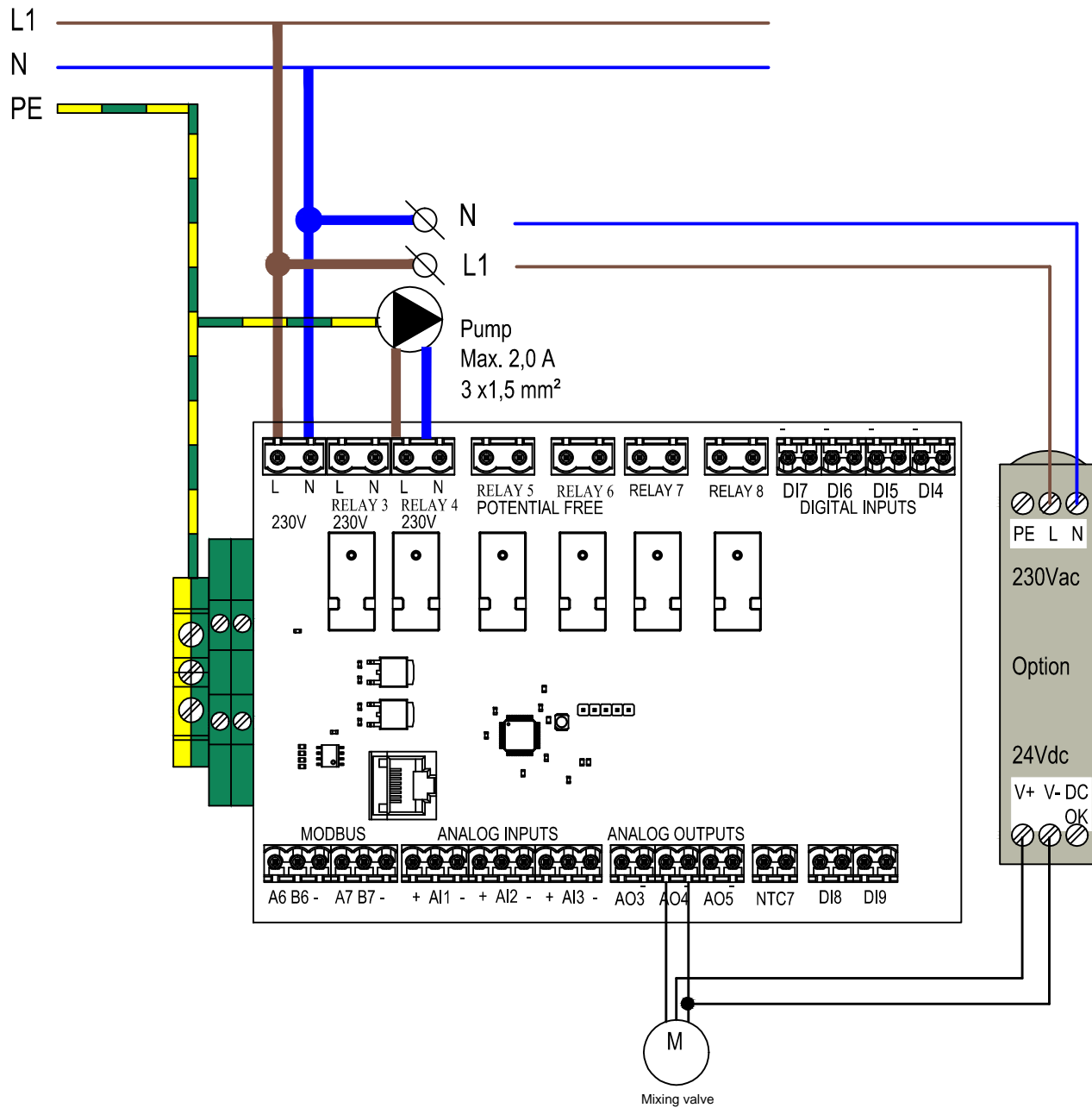
## 2. Post heater



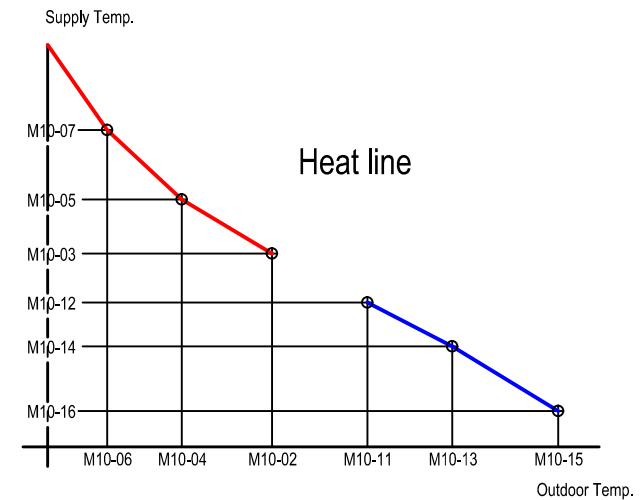
Parameter			
Menu:	M6	Relay	
Position	Parameter	Description	Unit
M6-03	6	Post-Heater (pump)	
Menu:	M7	Analog Output	
Position	Parameter	Description	Unit
M7-03	5	Post-Heater (valve)	
Menu:	M10	Temp. Control	
Position	Parameter	Description	Unit
M10-01	0.	Tcomfort T3	
	1.	Outdoor heatline	°C



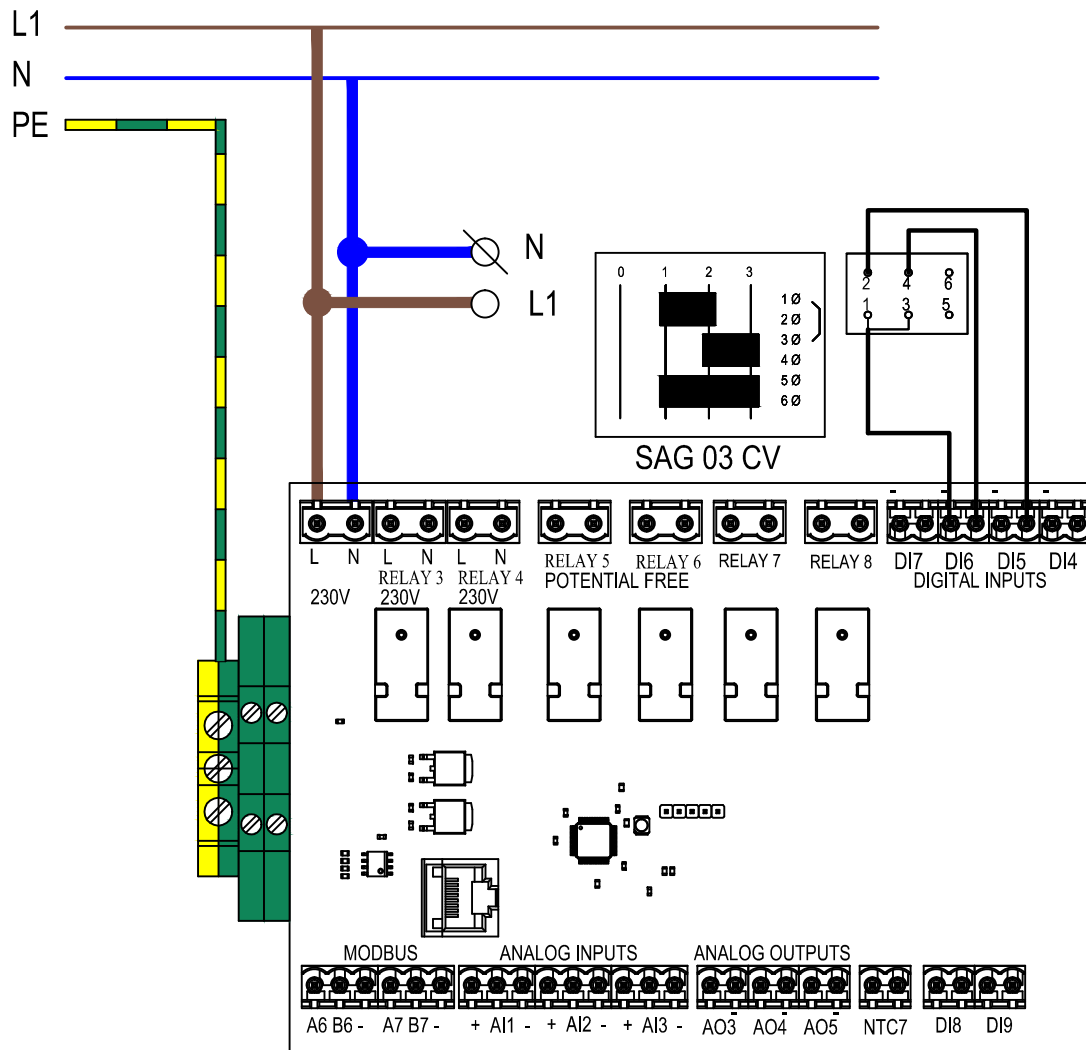
# 3. Cooling



Parameter			
Menu:	M6	Relay	
Position	Parameter	Description	Unit
M6-04	6	Post-Cooler (pump)	
Menu:	M7	Analog Output	
Position	Parameter	Description	Unit
M7-04	5	Post-Cooler (valve)	
Menu:	M10	Temp. Control	
Position	Parameter	Description	Unit
M10-01	0.	Tcomfort T3	
	1.	Outdoor heatline	°C

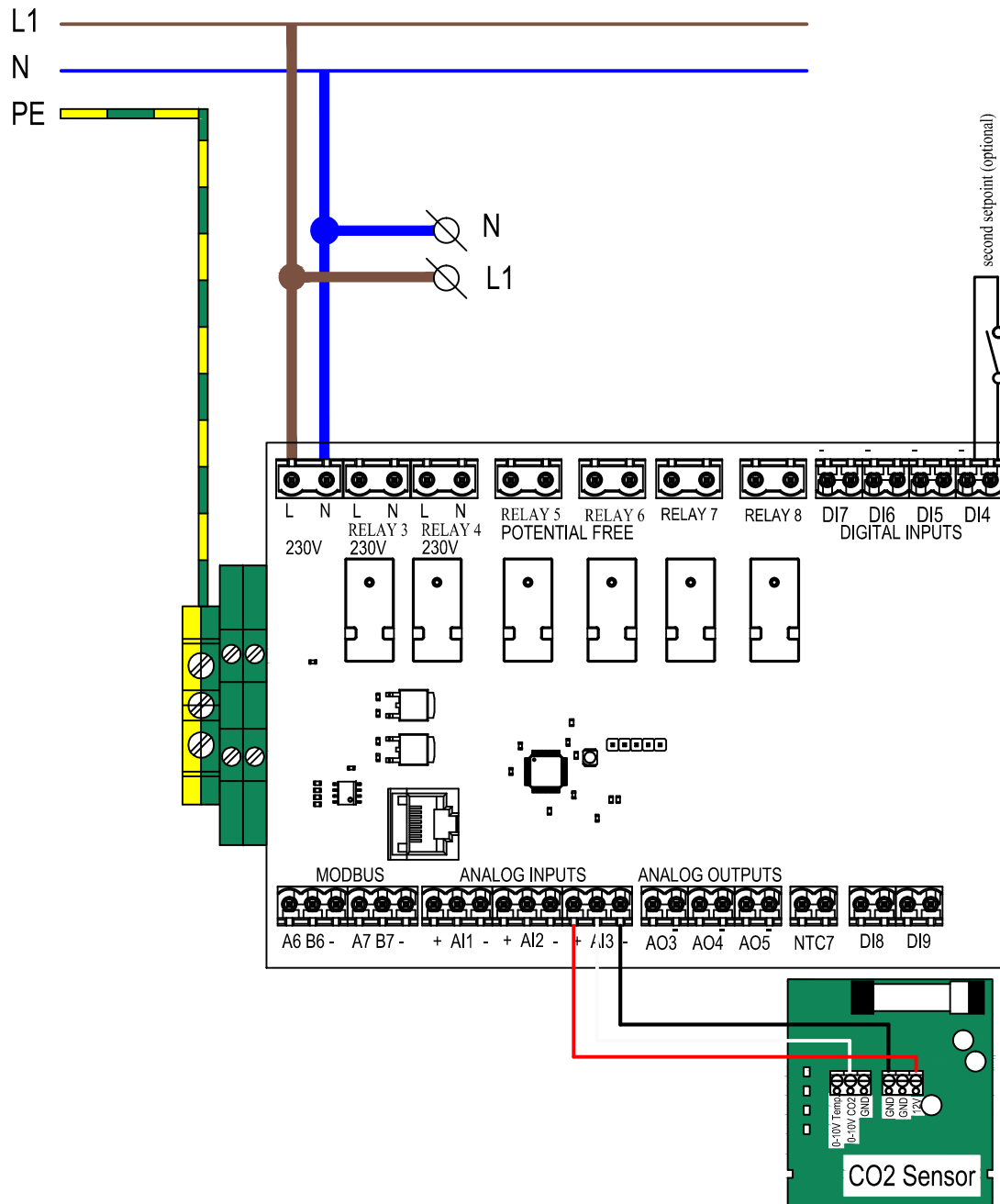


# 4. Three position switch



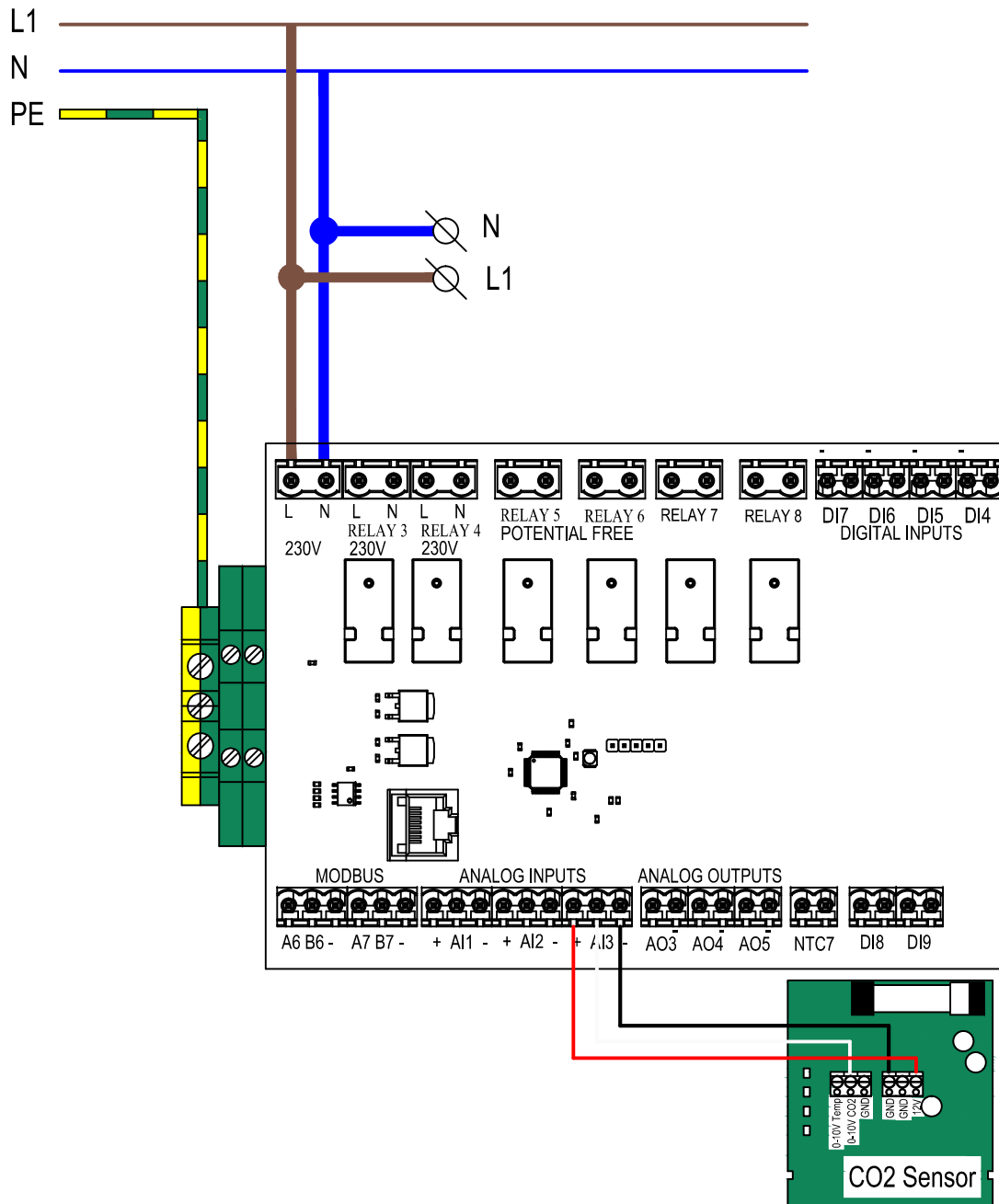
Parameter			
Menu:	M2	Ventilation	
PositionI	Parameter	Description	Unit
M2-01	....	Supply air 1	m <sup>3</sup> /h
M2-02	....	Supply air 2	m <sup>3</sup> /h
M2-03	....	Supply air 3	m <sup>3</sup> /h
M2-05	....	Exhaust air 1	m <sup>3</sup> /h
M2-06	....	Exhaust air 2	m <sup>3</sup> /h
M2-07	....	Exhaust air 3	m <sup>3</sup> /h
M2-10	0.	Constant Flow (internal)	m <sup>3</sup> /h
Menu:	M50	Miscellaneous	
PositionI	Parameter	Description	Unit
M05-05	1.	Ventilation 1	
M05-06	3.	Ventilation 3	
Menu:	M50	Miscellaneous	
PositionI	Parameter	Description	Unit
M50-03	1. Yes	Switch SAG 0-3CV	

# 5. 0 - 10V Sensor (control)



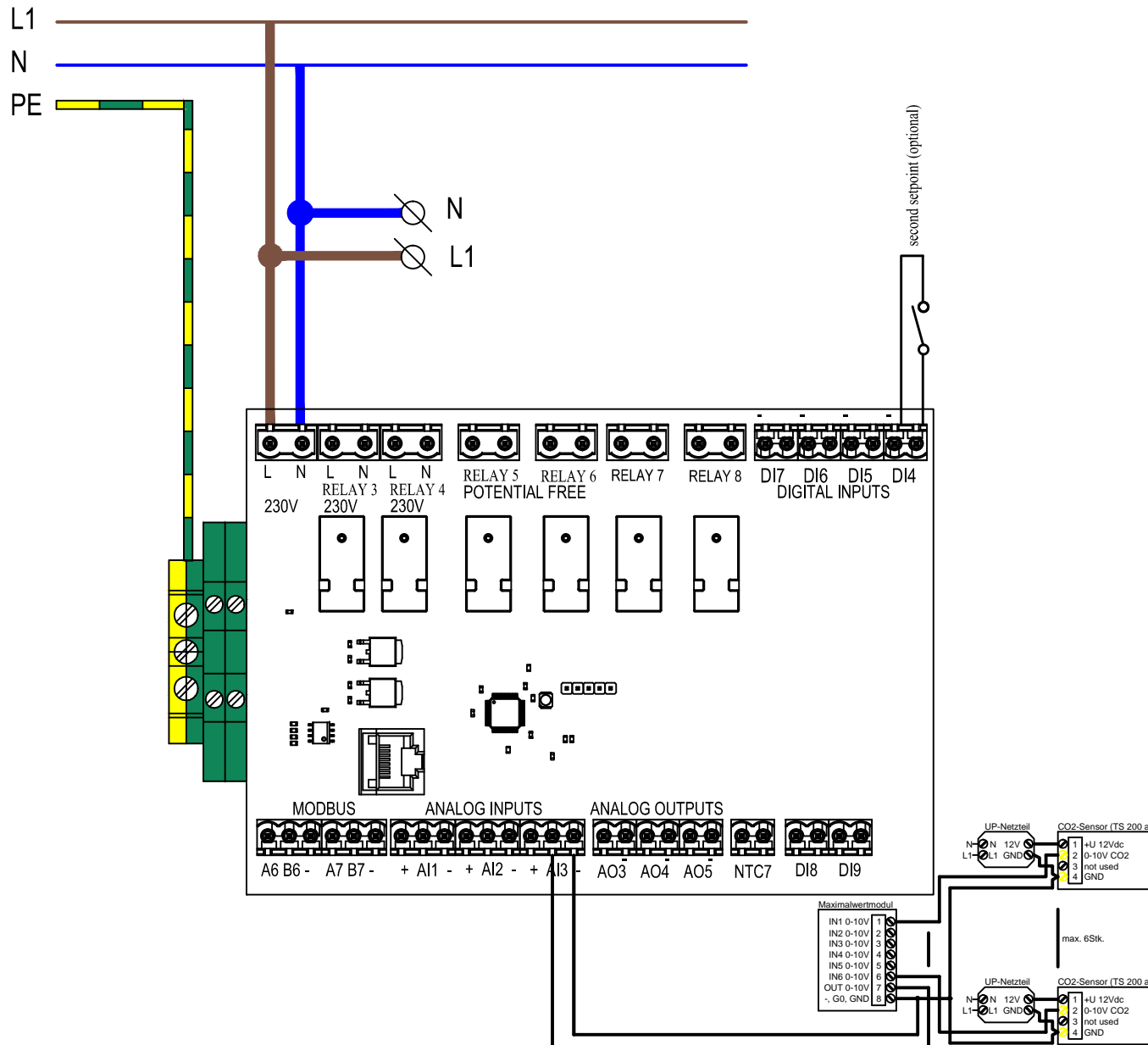
Parameter			
Menu:	M02	Ventilation	
Position	Parameter	Description	Unit
M02-10	4.	0.....10V (negative)	
M02-16	.....	0....10V setpoint exhaust	V
Menu:	M04	Ventilation setting	
Position	Parameter	Description	Unit
M04-11	100	Exhaustair factor	
Menu:	M9	Analog input	
Position	Parameter	Description	Unit
M9-03	9	EHA, 0-10V	
Menu:	Optional: Second setpoint		
M02-18	.....	0....10V setp. 2 exhaust	V
M05-04	25	Second setpoint select	

# 6. 0 - 10V Sensor (steering)



Parameter			
Menu:	M02	Ventilation	
Position	Parameter	Description	Unit
M02-01	.....	Supply air 1	m <sup>3</sup> /h
M02-02	.....	Supply air 2	m <sup>3</sup> /h
M02-03	.....	Supply air 3	m <sup>3</sup> /h
M02-04	.....	Supply air 4	m <sup>3</sup> /h
M02-05	.....	Exhaust air 1	m <sup>3</sup> /h
M02-06	.....	Exhaust air2	m <sup>3</sup> /h
M02-07	.....	Exhaust air 3	m <sup>3</sup> /h
M02-08	.....	Exhaust air 4	m <sup>3</sup> /h
M02-10	0.	Constant Flow (internal)	m <sup>3</sup> /h
Menu:	M9	Analog input	
Position	Parameter	Description	Unit
M9-03	3	Proportional ventilation	

# 7. 0 - 10V Sensor (control or steering; max. 6Sk.)



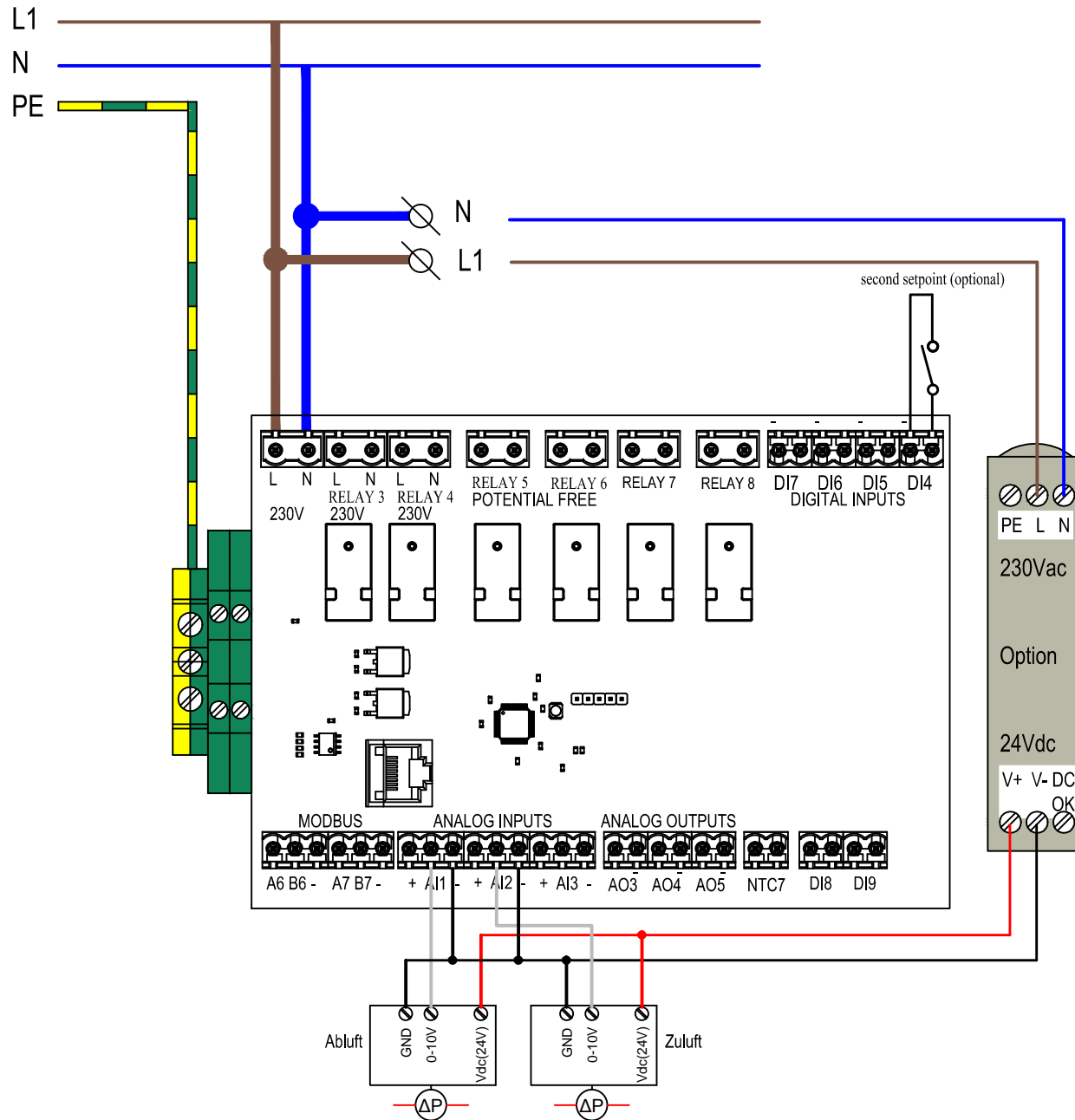
## control

Parameter			
Menu:	M02	Ventilation	
Position	Parameter	Description	Unit
M02-10	4.	0....10V (negative)	
M02-16	.....	0....10V setpoint exhaust	V
Menu:	M04	Ventilation setting	
Position	Parameter	Description	Unit
M04-11	100	Exhaustair factor	
Menu:	M9	Analog input	
Position	Parameter	Description	Unit
M9-03	9	EHA, 0-10V	
Menu:	Optional: Second setpoint		
M02-18	.....	0....10V setp. 2 exhaust	V
M05-04	25	Second setpoint select	

## steering

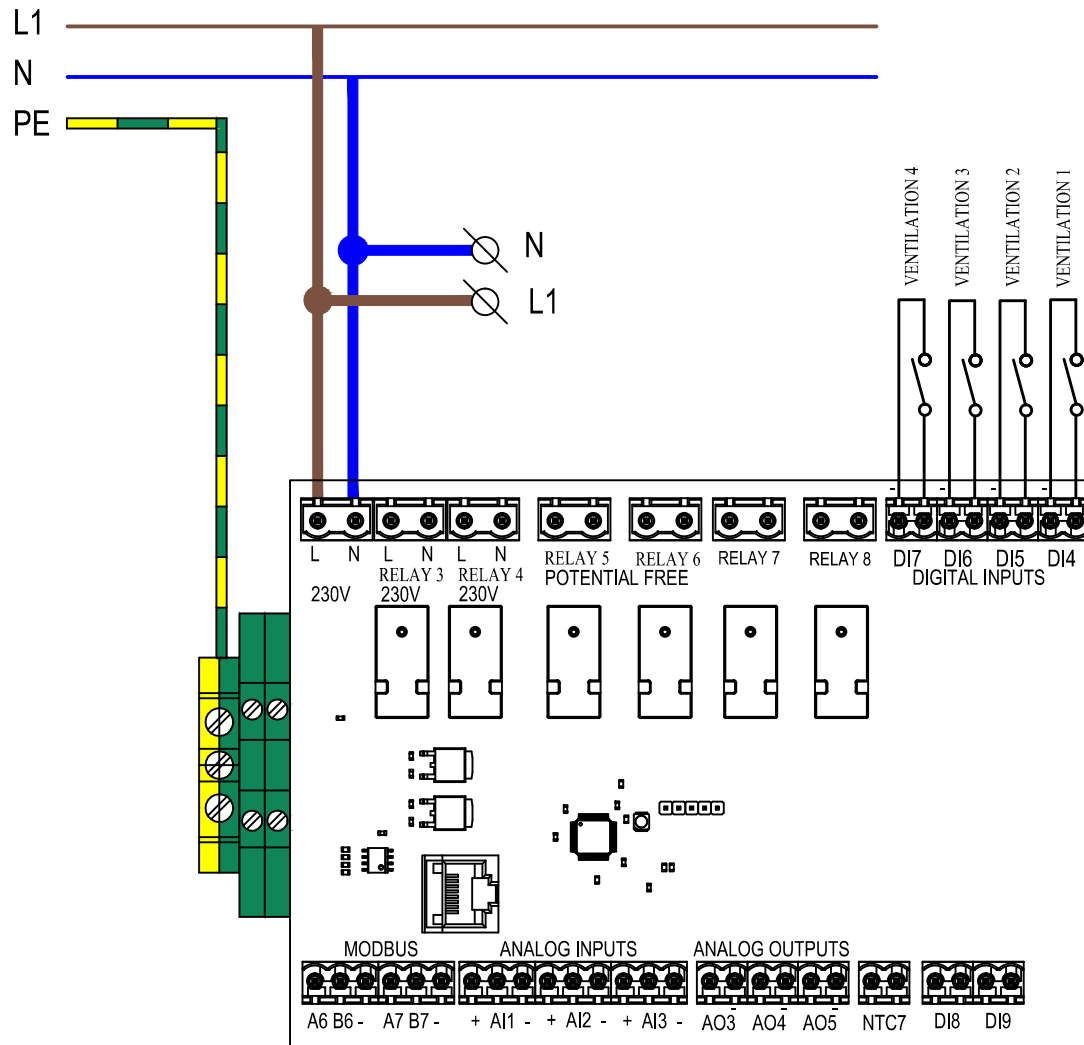
Parameter			
Menu:	M02	Ventilation	
Position	Parameter	Description	Unit
M02-01	.....	Supply air 1	m <sup>3</sup> /h
M02-02	.....	Supply air 2	m <sup>3</sup> /h
M02-03	.....	Supply air 3	m <sup>3</sup> /h
M02-04	.....	Supply air 4	m <sup>3</sup> /h
M02-05	.....	Exhaust air 1	m <sup>3</sup> /h
M02-06	.....	Exhaust air2	m <sup>3</sup> /h
M02-07	.....	Exhaust air 3	m <sup>3</sup> /h
M02-08	.....	Exhaust air 4	m <sup>3</sup> /h
M02-10	0.	Constant Flow (internal)	m <sup>3</sup> /h
Menu:	M9	Analog input	
Position	Parameter	Description	Unit
M9-03	3	Proportional ventilation	

# 8. Pressure sensor (Exhaust + Supply)



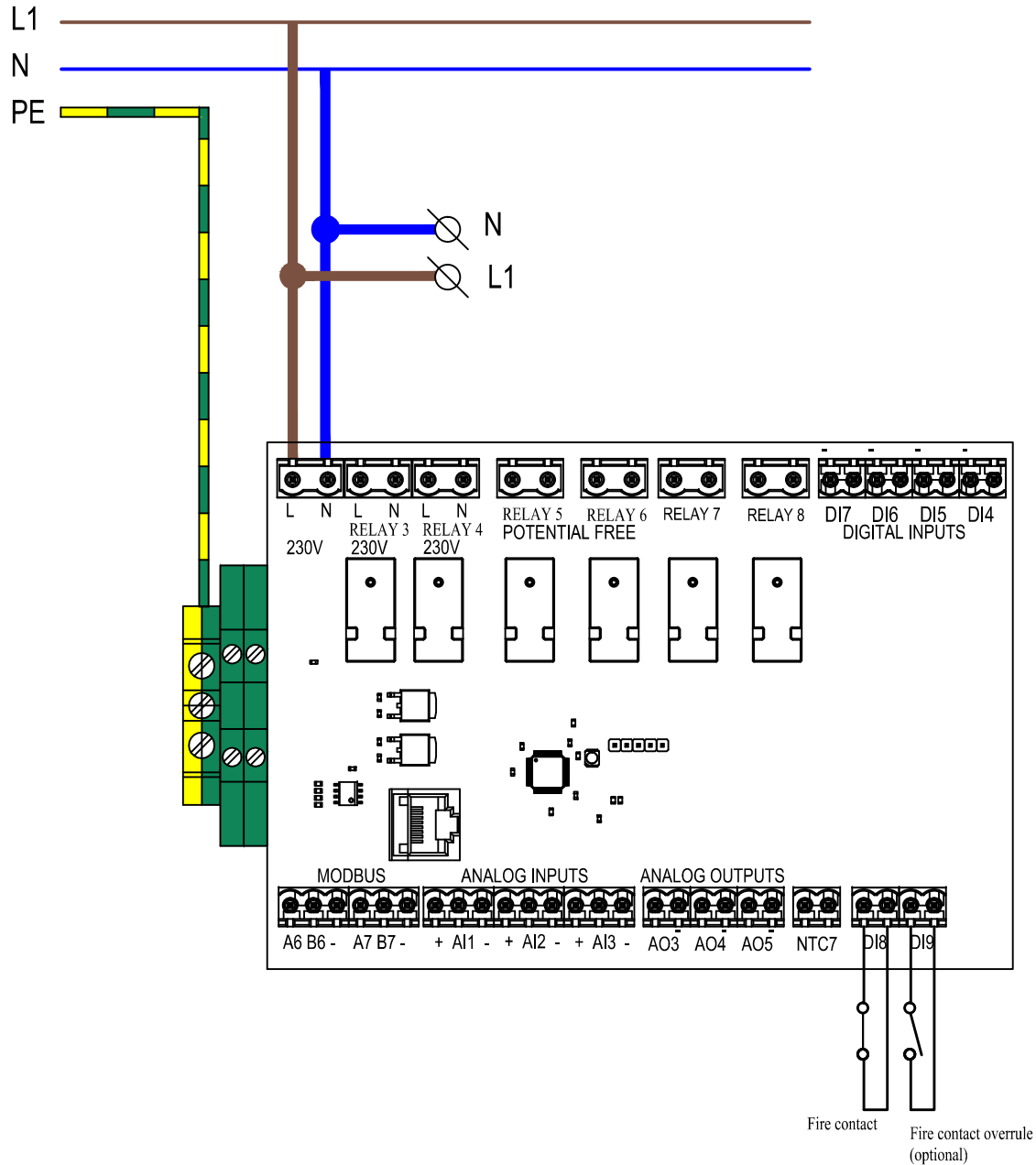
Parameter			
Menu:	M2	Ventilation	
Position	Parameter	Description	Unit
M02-10	1.	Constant Pressure (positive)	
M02-11	....	Const.press.setpoint supply	Pa
M02-12	....	Const.press.setpoint exhaust	Pa
Menu:	M4	Ventilation setting	
Position	Parameter	Description	Unit
M04-09	100	I-Time const.press. Control	sec
Position	Parameter	Description	Unit
M09-02	4	Supply air press. 0.....500Pa	
M09-03	5	Exhaust air press. 0.....500Pa	
Menu:	Optional: 2nd setpoint		
M02-13	....	Const.press.setp.2 supply	Pa
M02-14	....	Const.press.setp.2 exhaust	Pa
M05-04	25	Second setpoint select	

# 9. Ventilation settings



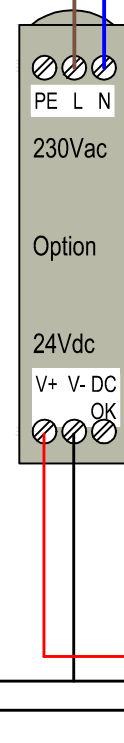
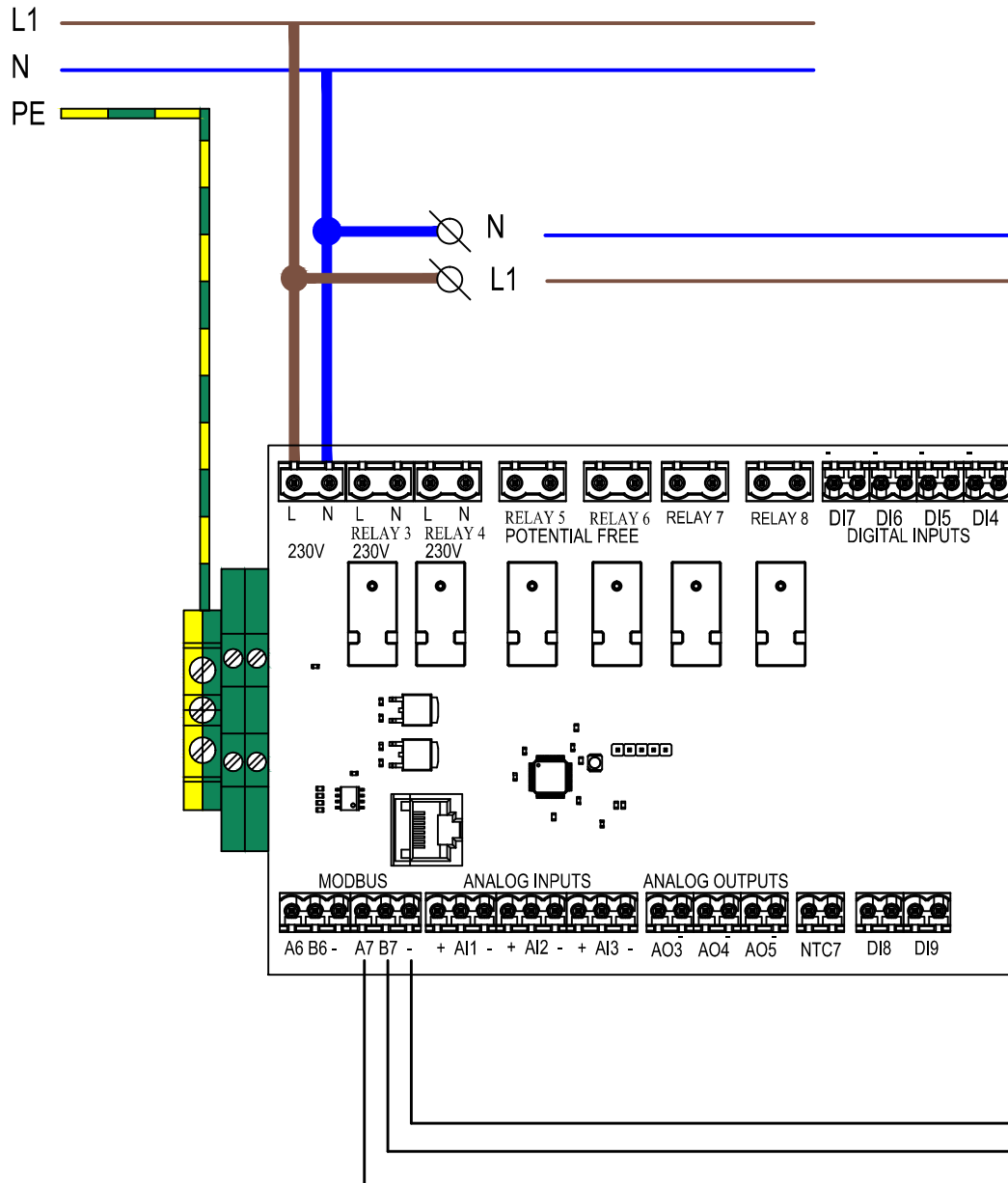
Parameter			
Menu:	M02 Ventilation		
PositionI	Parameter	Description	Unit
M02-01	...	Supply air 1	m <sup>3</sup> /h
M02-02	...	Supply air 2	m <sup>3</sup> /h
M02-03	...	Supply air 3	m <sup>3</sup> /h
M02-04	...	Supply air 4	m <sup>3</sup> /h
M02-05	...	Exhaust air 1	m <sup>3</sup> /h
M02-06	...	Exhaust air 2	m <sup>3</sup> /h
M02-07	...	Exhaust air 3	m <sup>3</sup> /h
M02-08	...	Exhaust air 4	m <sup>3</sup> /h
M02-10	0	Constant Flow (internal)	m <sup>3</sup> /h
Menu:	M05 Digitale input		
PositionI	Parameter	Description	Unit
M05-04	1	ventilation 1	
M05-05	2	ventilation 2	
M05-06	3	ventilation 3	
M05-07	4	ventilation 4	

# 10. Fire setting

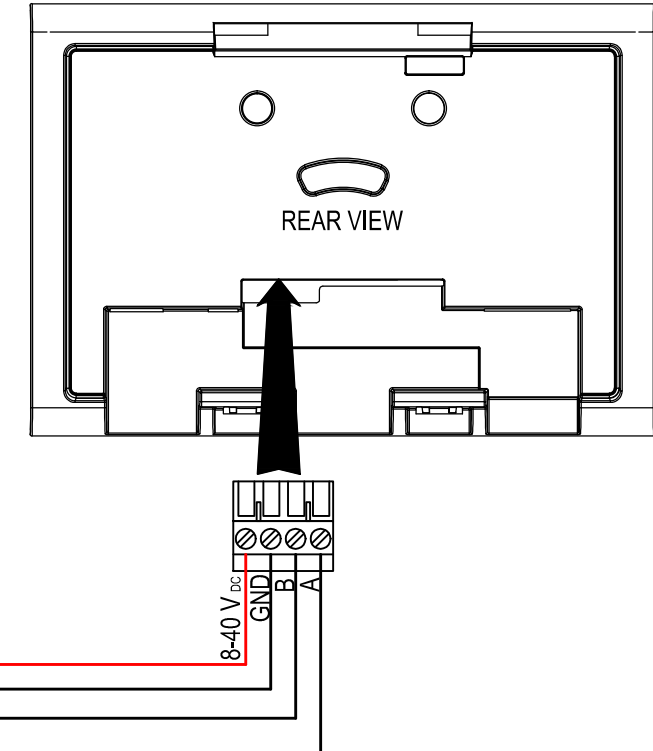


Parameter			
Menu:	M02	Ventilation	
position	Parameter	Description	Unit
M02-19	...	Fire supply air	%
M02-20	...	Fire axhaust air	%
Menu:	M05	Digital input (DI)	
position	Parameter	Description	Unit
M05-04	20	Fire contact (norm.closed)	
Menu:	Optional: Fire overrule		
M02-21	....	Fire overrule supply air	%
M02-22	...	Fire overrule exhaust air	%
M05-07	24	Enable Fire Overrule	

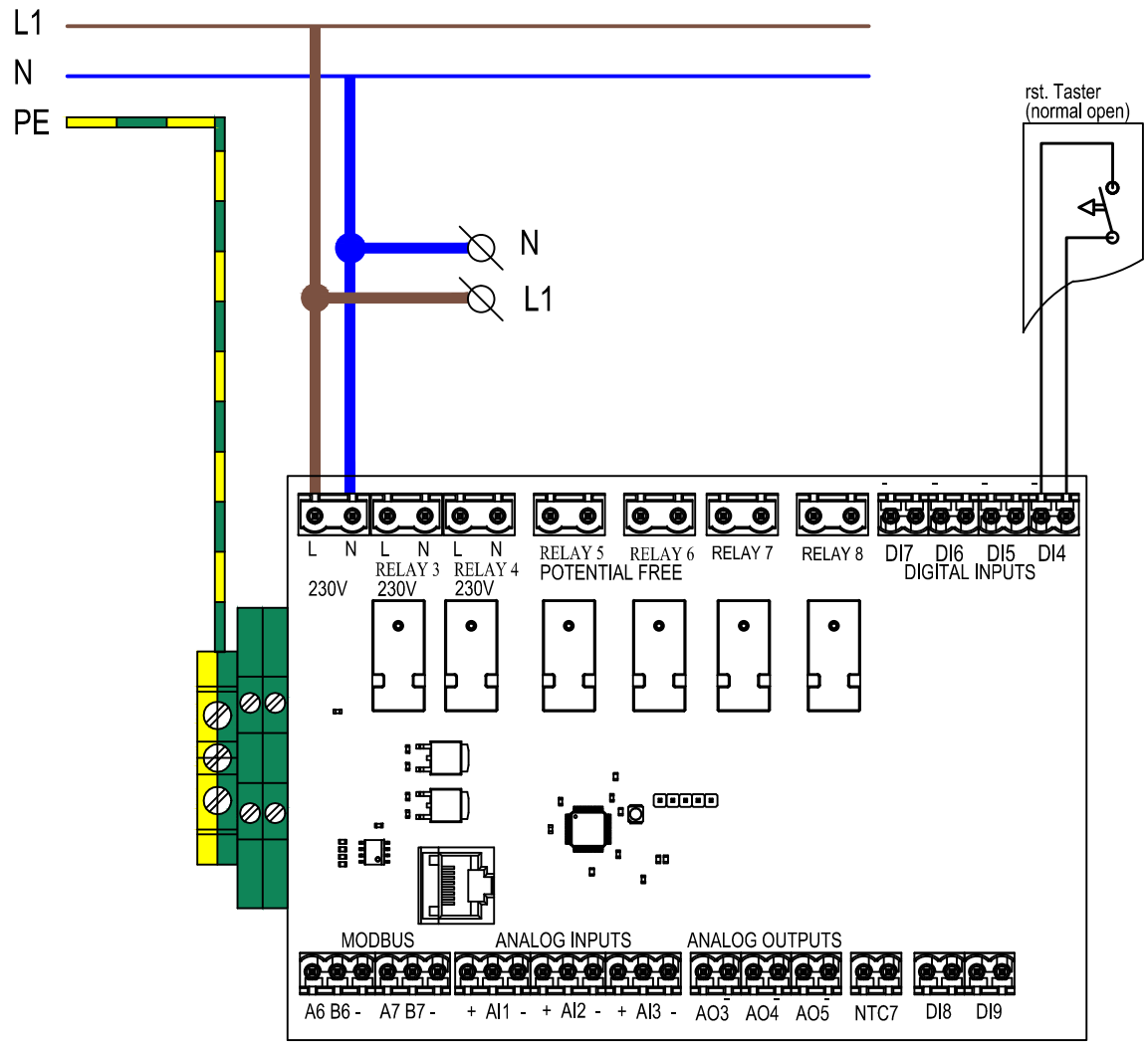
# 11. ComfoTouch XL



Parameter			
Menu:	M80	Modbus	
Position	Parameter	Description	Unit
M80-01	1	Address	
M80-02	1	19K2, N, 2	
M80-03	60	Watchdog Communication	sec.
Menu:	M5	Digitale Input (Optional)	
Position	Parameter	Description	Unit
M05-??	14	Enable Supply Fan	
	15	Enable Exhaust Fan	
	19	Enable ComfoAir XL	
	21	Enable Summernight Ventilation	
	25	Second Setpoint Select	
	26	Enable Time Clock	

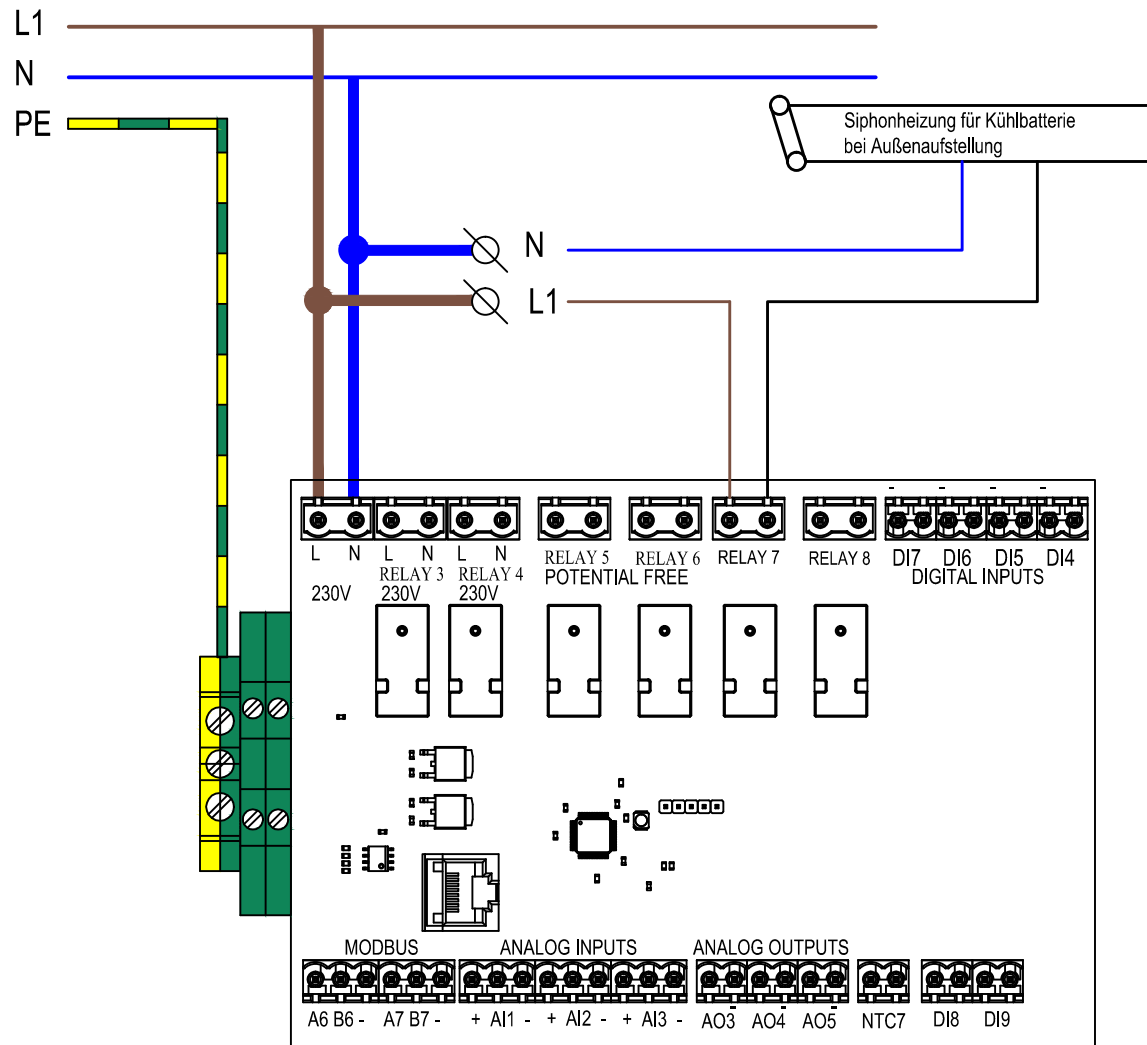


# 12. Reser-Taster



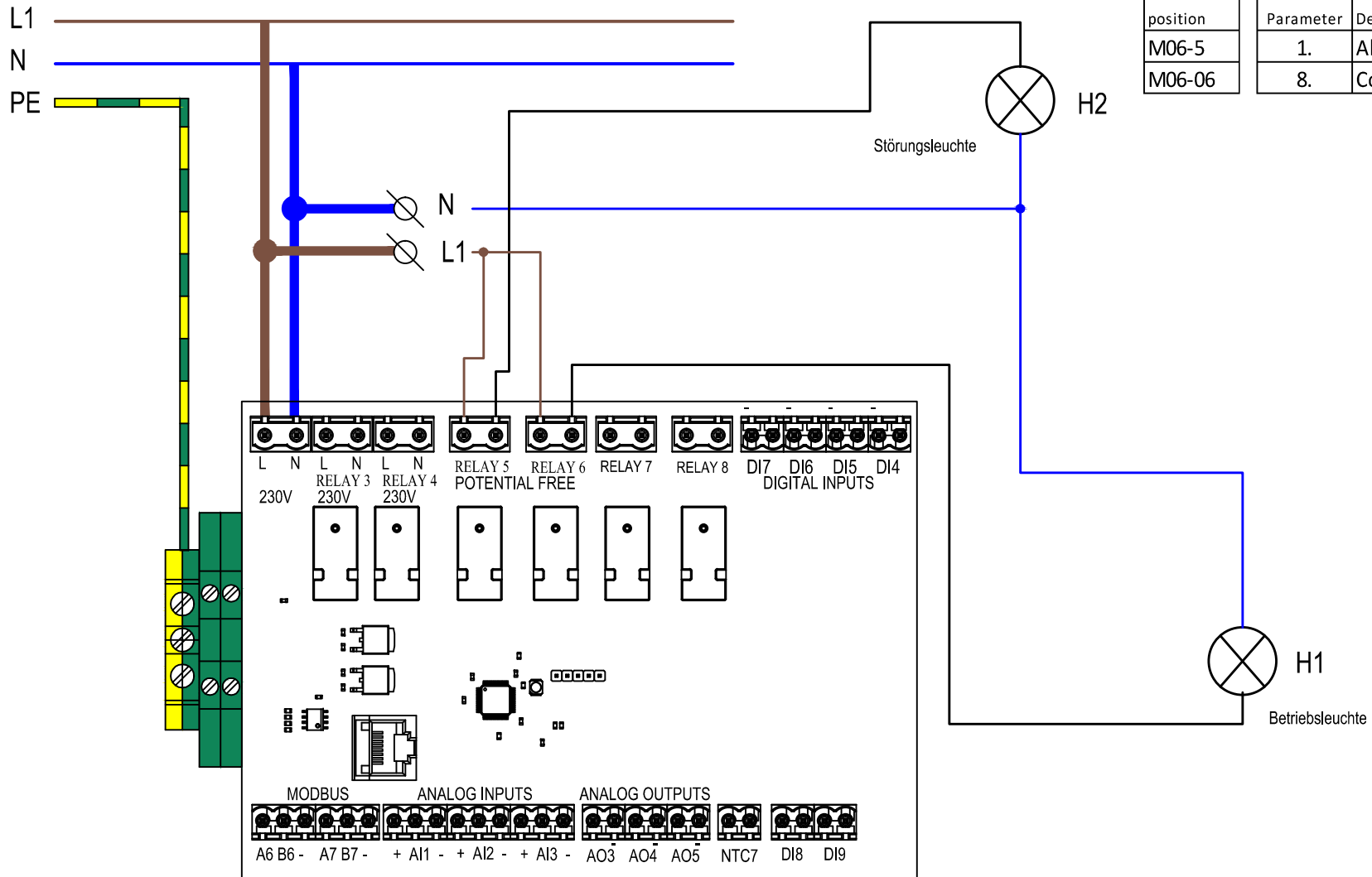
Parameter			
Menu:	M05	Digital Input	
Position	Parameter	Description	Unit
M05-04	23	Reset all alarms	

# 13.Siphon-Heizung



Parameter			
Menu:	M06	Relay	
position	Parameter	Description	Unit
M06-07	7.	Siphon heating	

# 14. Stör- und Betriebsleuchte



Parameter			
Menu:	M06	Relay	
position	Parameter	Description	Unit
M06-5	1.	Alarm (normally open)	
M06-06	8.	ComfoAir XL active	